

Food Webs: Ponds



Newbyte
Educational Software

 **CURRICULUM ONLINE**
www.curriculumonline.gov.uk
REGISTERED CONTENT PROVIDER

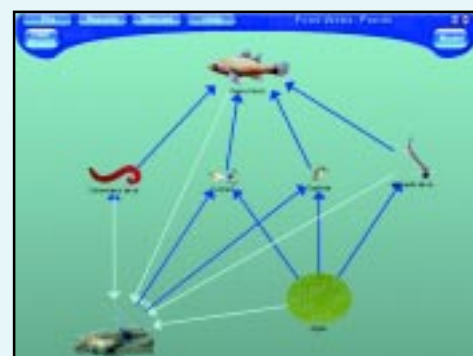
www.newbyte.com

**Available on
21 day Approval!**
Pay nothing until you're satisfied
with our software.

Investigate the dynamic ecology of ponds - Australian, UK or even your own!
Construct food chains and webs using up to 45 organisms and then model the populations.

Fantastic for project style learning!
Incorporate digital photography and data logging.

- ✓ **Web site support** with additional species and pond environments.
- ✓ Investigate **introduced species and biological control**.
- ✓ Personalise the software by having your school pond as the title or background picture.



Model your food webs for up to 2 years
Control pollution levels!

- ✓ Change the web easily during modelling to allow for the **introduction of species** and a changing ecosystem.
- ✓ **Control levels of:** Sewage Pollution, Phosphate, Nitrate, Turbidity and Thermal Pollution
- ✓ Various graph types including biomass pyramid.



Full Environment and Species Editor
Make your own Species!

- ✓ Use your own species pictures in the software.
- ✓ Integrate **physical data collected** about your pond. Modelling then works with your own ponds physical data and species.
- ✓ Exchange new species within your class or around the world.



Food Webs: Ponds includes a Full Environment and Species Editor

The integrated editor allows you to:

- ✓ Edit the physical environment to match your pond.
- ✓ Change existing species.
- ✓ Create new species.
- ✓ Import new species created by others.

Simple to use curves allow vast amounts of data to be easily entered.

A unique predator-prey interface allows you to easily decide what species eat and how important the prey are in their survival.

Changes made directly affect the modelling of your web.

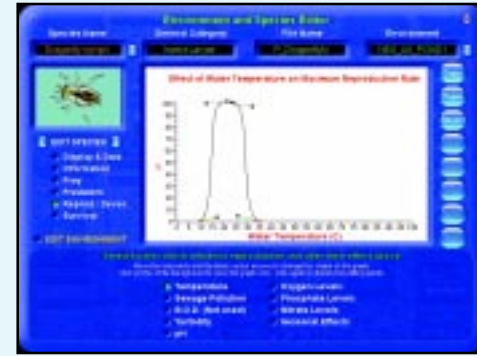
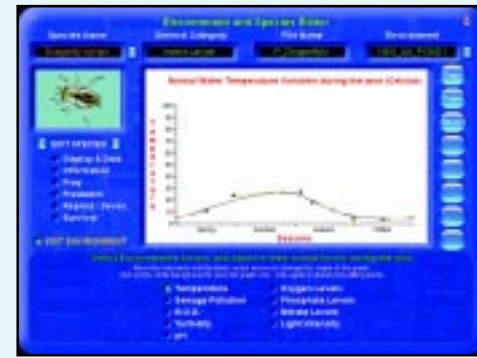
Edit environmental data including yearly:

- Temperatures
- Sewage Pollution levels
- B.O.D.
- Turbidity
- Oxygen Levels
- pH
- Phosphate levels
- Nitrate Levels
- Light Intensity

Edit species data including:

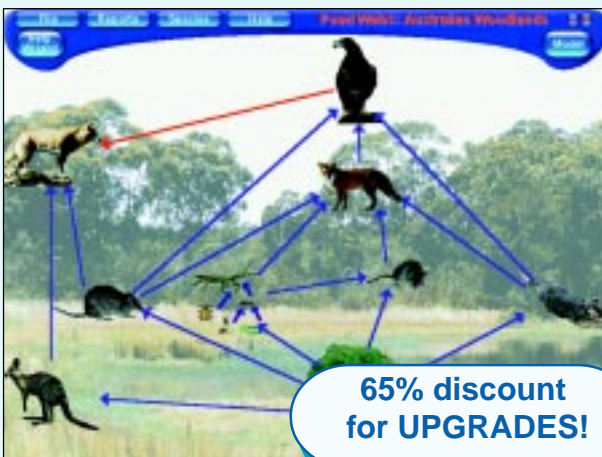
- Display Diagrams
- Physical Data
- Prey
- Reproduction, development and survival under different conditions
- Background Information

Available for IBM. Windows 98, ME, NT, 2000 & XP and most networks.



Food Webs: Australian Woodlands

FREE 14 Day Trial!
www.newbyte.com



65% discount
for UPGRADES!

Explore the food chains and webs of one of the world's most unique communities.

New Features include:

- Improved High Colour graphics.
- Species Names now shown with the diagrams.
- Choose own background and title screen
- Improved Web and Graph printing.
- Full 32bit Windows program.



Ideal for both junior and senior science.
Investigate the influence of introduced species.

Includes Full Web Modelling!

- Model 30 species for 25 years.
- Change the web easily during modelling to allow for the introduction of species.
- Control rainfall, bush fires, farming and migration.
- Various graphs including biomass.
- View or printout seasonal data.
- Change Species start numbers.
- Save Food Webs and data.

Available for IBM. Windows 95, 98, ME, NT, 2000 & XP and most networks.

